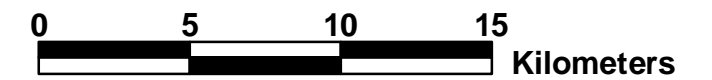


# Eloy-Casa Grande-Mahalo Height Modernization Survey

August 30 and 31, 2006

Scale 1:250,000



## Existing NGS Stations

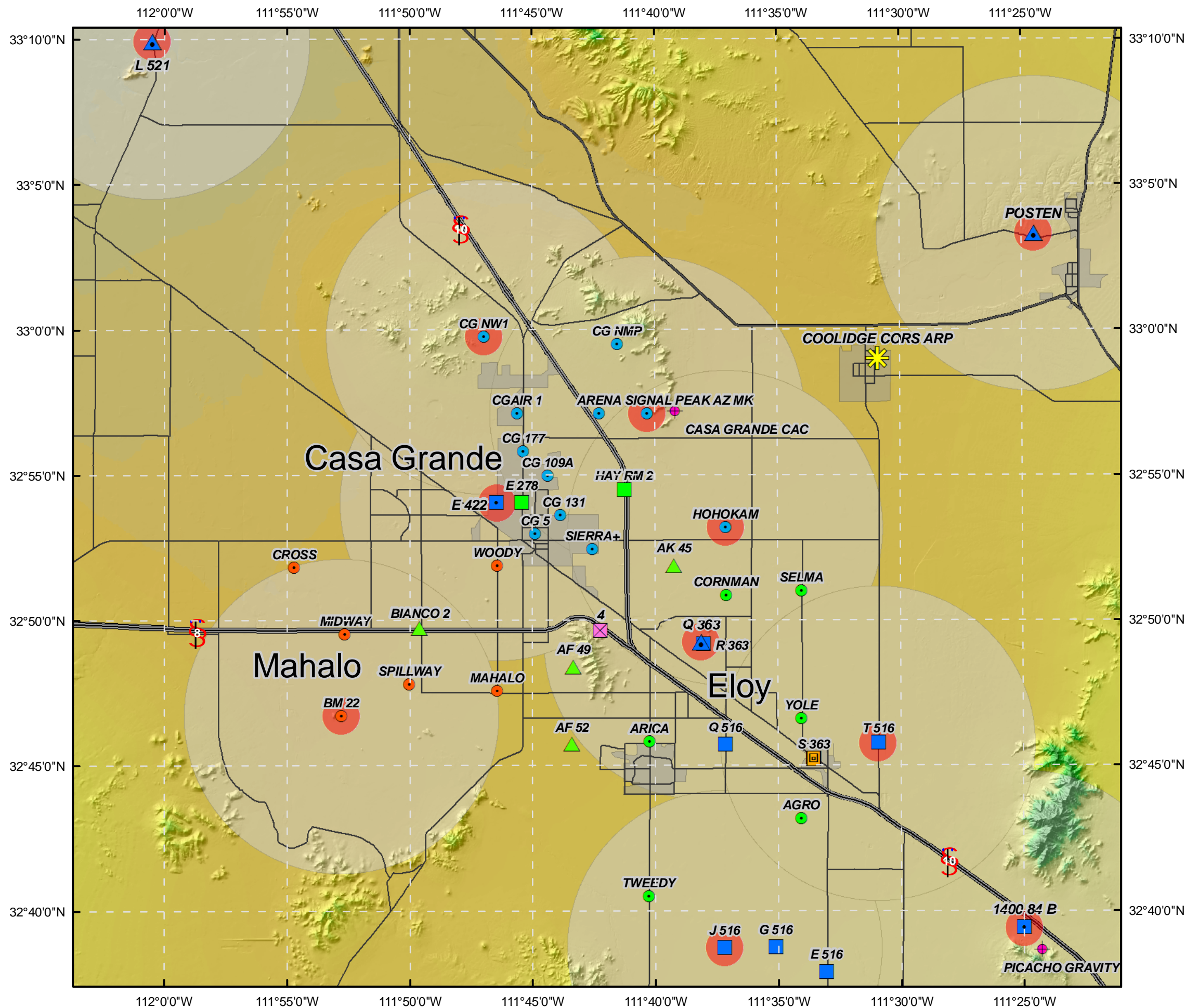
- HARN, 1st order vertical, bedrock
- 1st order vertical (adjusted), bedrock
- 1st order vertical (readjusted), bedrock
- 1st order vertical (adjusted), steel rod
- 1st order vertical (adjusted), concrete
- 1st & 2nd order vertical (VERTCON)
- 1st order horizontal (terrestrial)
- CORS

## Proposed New Stations

- Eloy
- Casa Grande
- Mahalo
- Gravity stations (eccentric marks)

Primary control stations (5-hour occupations) denoted by red circle and 10-km buffer

## Vicinity Map



Casa Grande

Mahalo

Eloy

POSTEN

COOLIDGE CORS ARP

CASA GRANDE CAC

ARICA

1400.84 B

PICACHO GRAVITY

TWEEDY

AGRO

YOLE

CORNMAN

SELMA

AK 45

HOHOKAM

HAY RM 2

CG 131

CG 109A

CG 177

CG NW1

CG AIR 1

CG NMP

ARENA SIGNAL PEAK AZ MK

CG 5

SIERRA+

WOODY

E 278

E 422

CROSS

BIANCO 2

MIDWAY

AF 52

AF 49

SPILLWAY

MAHALO

BM 22

Q 363

R 363

Q 516

S 363

T 516

J 516

G 516

E 516

L 521